



Hybrid Installation Guide.

Published 2025

Hybrid Flooring Installation

STRATA Premium *Hush*

STRATA Sentry

STRATA Home

INTRODUCTION

Strata Flooring offers three high-performance hybrid ranges—Strata Premium Hush, Strata Sentry, and Strata Home. Hybrid flooring is a durable, water-proof and popular choice for Kiwi Homes.

INSTALLATION LIMITATIONS

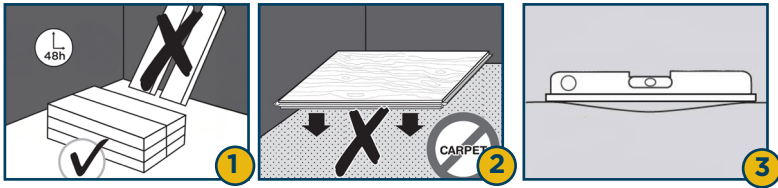
Strata hybrid flooring ranges are floating floors. Do NOT fix the flooring to the subfloor. The floor must remain free-floating, with expansion space provided along 100% of the room perimeter and around all fixed objects.

Do not install your Strata flooring over carpet or a separate underlayment. Strata flooring is not suitable for any outside use. Strata flooring is not suitable for use inside showers. Do not glue, nail, screw or fasten your Strata hybrid flooring to substrate.

TOOLS NEEDED

- Hybrid tapping block
- Straight edge
- Rubber mallet
- Utility knife or Saw (jigsaw, skill saw, hand saw, or drop saw)
- Pencil
- Spacers (if you do not have spaces, you can use an offcut of your flooring)
- Tape measure

PREPARATION



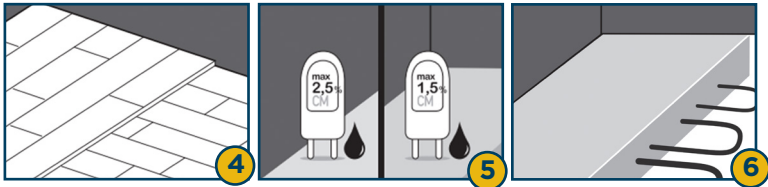
1. Let the planks acclimatize for 48 hours in their unopened packaging at normal room temperature, placed in the centre of the room where they will be installed. Ideal conditions are 13–32°C with 40–60% relative humidity. If conditions fall outside this range, acclimatize for 1 week with the packages opened.

2. To prepare the subfloor, remove any damp-porous floor coverings such as carpet or needle-felt. Damp-sealed coverings (PVC, linoleum, VCT) can remain. For wooden floors, lift a board to check for any signs of mould or insect infestation before beginning installation. Nail or screw any loose areas of the subfloor.

3. Using a straight edge, ensure the subfloor meets the required flatness. Grind any high spots and fill low spots with levelling compound to meet the evenness tolerance. Grout lines wider than 3mm and deeper than 2mm should be filled.

Strata Premium Hush: 6mm over 3.05m

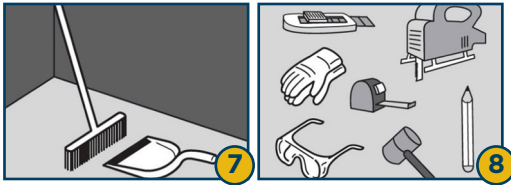
Strata Sentry and Strata Home: 3mm over 2.00m



4. Install the new floor at ninety degrees to the existing subfloor. The crawl space under the floor must be sufficiently ventilated (minimum 4 cm² (1/2") total ventilation openings per m² (40") of floor). The moisture content of the wood must not exceed 10%.

5. The moisture content of the subfloor must be less than 2.5%CM / 75%RH (cement screed) or less than 0.5%CM / 50%RH (anhydrite screed - subfloor). In the case of floor heating, results must be respectively 1.5%CM / 60%RH and 0.3%CM / 40%RH. Always measure, record and keep your moisture content results. A new cement screed floor must dry at least 1 week per 1cm thickness up to 4cm. Thickness over 4cm require twice as much drying time. For example, a 6cm concrete subfloor must dry at least 8 weeks. Moisture measurements should always be taken (and a protocol must be kept for the future.)

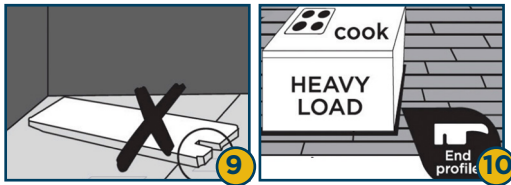
6. Strata Hybrid flooring is suitable for installation over both warm-water and electric underfloor heating systems. Warm-water heating elements must be recessed a minimum of 12.7 mm below the finished floor surface. Maximum floor temperature is 30°C. Turn the underfloor heating system off during installation and leave it off for at least 24 hours afterward. When switching it back on, gradually increase the temperature by no more than 5°C per day and avoid sudden temperature changes at all times.



7. After checking the subfloor for unevenness, carefully vacuum the entire surface. Make sure that the floor base is flat, clean, firm, and dry. To avoid risk of squeaking, secure any loose areas of the subfloor.

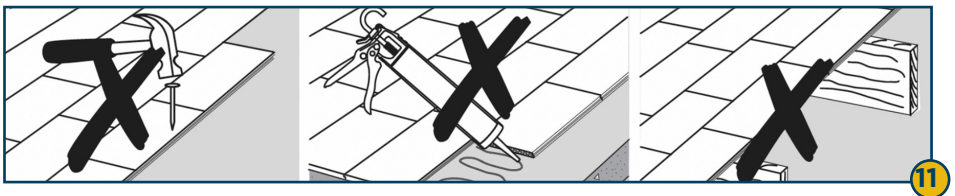
8. To install your hybrid floor, you will need the tools outlined on page 2.

Using accessories that are not recommended by Strata Flooring may cause damage to your floor and will void the warranty. For the best results and full warranty protection, always use Strata Flooring approved accessories, which are specifically designed and tested for use with Strata Flooring.



9. Check all flooring planks before and during installation. Defective planks must never be used. An installed plank is considered accepted and cannot be claimed on.

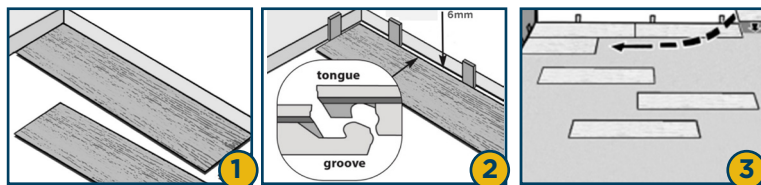
10. Install kitchen islands and other heavy objects before laying your flooring. The floor must be able to expand and contract to prevent gaps or separating planks. If your kitchen island is already in place, you will need to undercut the base or remove kickboards to allow for expansion. If this is not possible, expansion gaps can be concealed with an end cap trim.



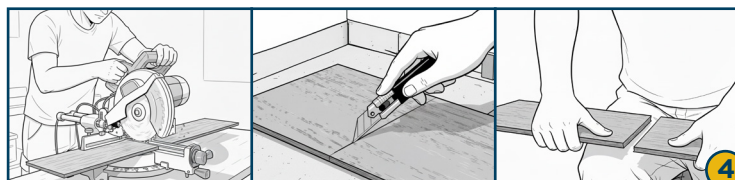
11. Strata hybrid flooring must be installed as a floating floor to allow natural expansion and contraction with changes in temperature and humidity. To maintain the benefits of a floating floor and prevent issues such as gaps or squeaking, never fasten the floor with nails, screws, silicone, or any other adhesive. If silicone is required, ensure you use a flexible variety so the flooring can expand and contract freely. **An expansion gap must be present on 100% of the floor perimeter. A single area with no expansion can compromise the integrity of the floor.**

12. Check to ensure that doors can still open and close after the flooring has been installed.

INSTALLATION



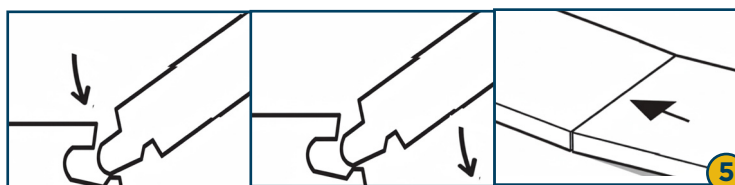
- 1.** Lay a row of loose planks without securing them to each other first to determine if you need to adjust the length of the first plank to avoid a small piece of less than 20cm on the opposite wall from where you started. Or, measure the length of the room and divide by the length of one plank.
- 2.** Installation should start in a corner (left hand) and proceed from the wall with the tongue facing the wall. For Strata Premium Hush use a 6mm expansion, for Strata Sentry and Strata Home use a 8mm expansion gap. Set spacers around the perimeter to allow for the required expansion gap.
- 3.** Continue adding planks along the short end, ensuring each one aligns evenly. Cut the final plank in the row to fit. If the offcut is long enough, it can be used to start the next row.



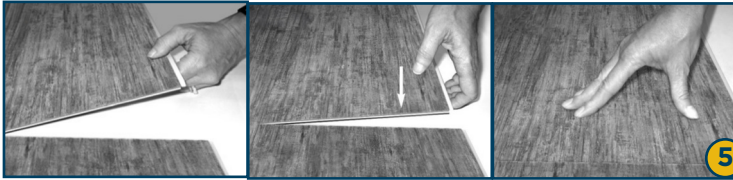
- 4.** When cutting Strata Hybrid planks, use a utility knife, jigsaw, skill saw, or drop saw along with a straight edge. Measure and mark the required length with a pencil. If using a utility knife, score the surface several times before snapping the plank. Alternatively, cut cleanly through the plank using your preferred saw.

STRATASentry

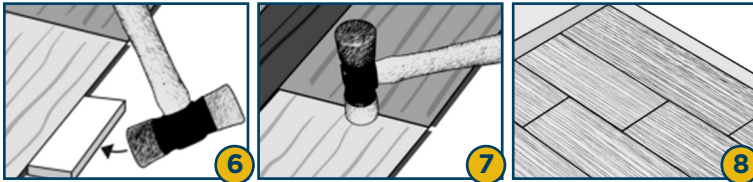
STRATAHome



- 5. For Strata Sentry and Strata Home:** Angle the second plank to fit the tongue into the groove of the first plank. Once in place, lower the second plank and then push to lock it into place.



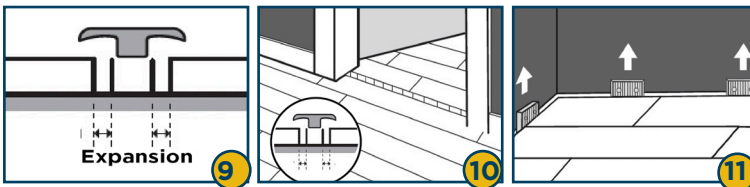
5. For Strata Premium Hush: Using Droplock 100 technology, begin the first row in a straight line. Interlock the short ends by inserting the tongue into the groove at an angle of approximately 10–20 degrees, then lower the plank to lock it into place. Continue installing each subsequent plank along the short end, ensuring all joints are aligned evenly.



1. Before starting, carefully measure the length and the width of the room to plan a precise layout to achieve a balanced appearance of the floor. This will ensure that you won't end up with the last row being too narrow. To avoid the last row being less than 50mm, cut down the planks of the first row. A starting or ending row should never be less than 50mm.

2. Use a soft faced hammer to lightly tap down on top of the planks on the short seam to ensure a tight fit.

3. If you are installing over a concrete subfloor a clear builder's plastic (minimum of 150 micron) must be installed below the flooring. Ensure all joints overlap and are fully sealed using a vapour-tight, waterproof tape. The plastic should be covered up the walls by 50mm and trimmed back after the flooring has been installed.

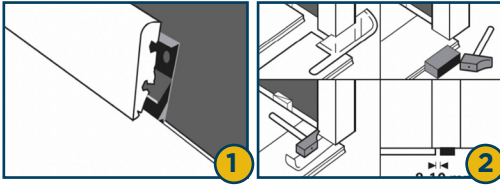


10. Rooms that exceed the maximum allowable size for each range (Strata Premium Hush: 20 m × 20 m, Strata Sentry: 10 m × 10 m, and Strata Home: 5 m × 5 m) require an expansion gap or a T-moulding transition to accommodate movement.

11. Continue like this to the end of the room.

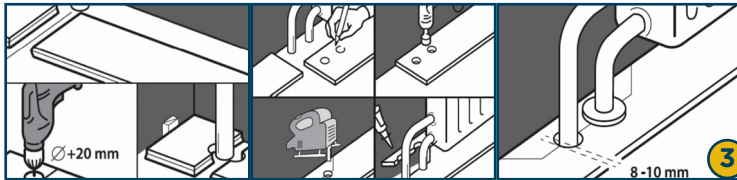
12. Doorways and archways less than 121 cm wide also require expansion gaps or T-moulding transitions in commercial applications.

FINISHING



1. Install the skirting board against the wall. Never attach the skirting board to the floor. This method allows the flooring to expand and contract under the new skirting board. Ensure skirtings are not fastened in a way that pins the floor.

2. Door frames will often need to be undercut to allow for expansion. If angling the plank when installing around a door is not possible, tap them in while flat or cut the bubble of the groove lip with a wood chisel or sanding machine and add wood glue to hold the panels together.



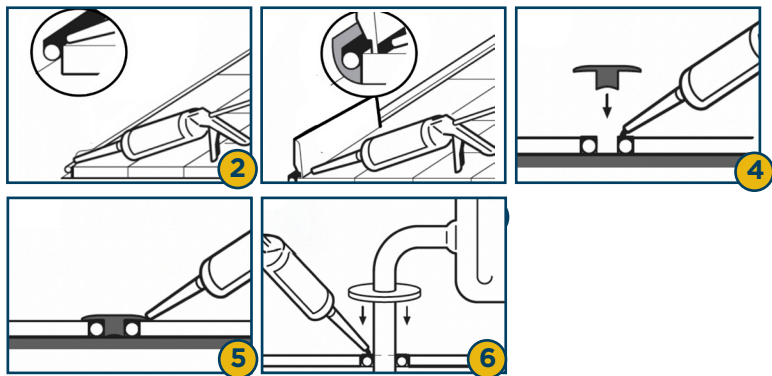
3. In rows where there is a pipe, make sure the pipe falls exactly in line with the short side of the two panels.

In rows where there is a double pipe, proceed as follows:

- Measure where the pipe will come through the plank. Don't forget to allow for expansion.
- Take a drill bit measuring the diameter of the pipe plus +20 mm for the expansion. Drill through the panel where the pipe will come through.
- Extend the hole to the edge of the panel.
- Lay the panel around the pipe.
- Take another panel and saw a piece that fits exactly in the remaining hole, and glue this piece with wood glue.

For a perfect finish around pipes, use pipe covers.

FINISHING IN MOISTURE PRONE AREAS



1. For wet-area rooms such as bathrooms, kitchens, laundries, and entrances, follow the steps below. Use a waterproof, transparent, flexible silicone together with a PE foam rod. The silicone must be fully waterproof to prevent moisture ingress and flexible to allow the flooring to expand and contract.
2. Push the PE foam rod of 8-10mm diameter into the expansion joints and apply the waterproof flexible silicone.
3. Install the skirting board. Apply silicone between the skirtings and floor to avoid ingress of water. *Tip: put a tape on the floor before applying the silicone, this tape can be removed immediately after applying the silicone for a tidy finish.*
4. For expansion joints, fit the base profile, place the PE foam rod and apply the silicone.
5. Push the transition profile in the base profile and apply silicone to the edge of the profile.
6. For a perfect finish around pipes, use pipe covers and the silicone on top of the PE foam rod. Then place the pipe cover and apply silicone around the edge.

AFTER INSTALLATION

You can walk on the floor during and immediately after installation.

Sweep, dust mop or vacuum your floor on a regular basis. Never use a steam mop on your hybrid flooring/

Learn how to properly care and maintain your Strata Hybrid flooring by reading our full Care & Maintenance Guide. Visit www.strataflooring.co.nz or simply scan the QR code.



STRATAFlooring

09 308 7948
hello@strataflooring.co.nz

strataflooring.co.nz

